

LIGHTING 2009

LIGHTING 2009

Style

LED flex lamp with cubic luminaire head and integral sensor switch, 400 mm flex hose, dia. 9 mm, with mounting bracket, 500 mm lead with LED plug, white.

Luminaire head

Length: 82 mm
Width: 38 mm
Height: 16 mm

Rating: 1,8 Watt/ 12 Volt DC
Semi Power SMD

Light colours: white, warm white

Colours: titanium, chrome

Various connections possible.



Aleo

LED flex lamp with round luminaire head and integral sensor switch, 400 mm flex hose, dia. 9 mm, with mounting bracket, 500 mm lead with LED plug, white.

Luminaire head

Diameter: Ø 52 mm
Height: 15 mm

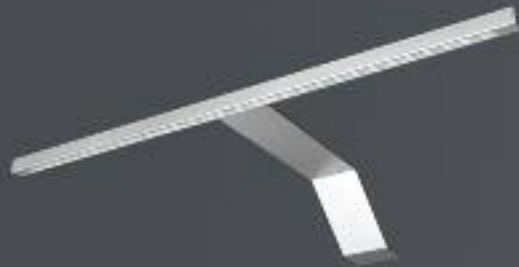
Rating: 1,5 Watt/12 Volt DC
Power LED

Light colours: white, warm white

Colours: titanium, chrome

Various connections possible.





Vario Top 2

LED linear surface luminaire, central projecting arm, 2000 mm lead with LED plug, white.

Length: 352 mm with 18 LEDs | 1,8 Watt
530 mm with 30 LEDs | 3,0 Watt

Height: 40 mm

Projection: 150 mm

Voltage: 12 Volt DC

Light colours: white, warm white

Colours: titanium, chrome



Slim

LED panel luminaire, with 1 light window and integral sensor switch with pivoting joint for panel mounting, 2000 mm lead with LED plug, white.

Luminaire head

Diameter: Ø 13 mm

Length: 352 mm

Rating: 1,8 Watt/ 12 Volt DC
Semi Power SMD

Light colours: white, warm white

Colour: titanium



2go

LED lighting with additional function of an innovative "Power LED rechargeable pocket torch" including charging station and electronic ballast.

In the charging station, it serves as an attractive, energy-saving, decorative form of lighting with integral switch; for mobile use, it is a battery-powered 1 Watt Power LED pocket torch.

Mobile:

Length: 91 mm

Width: 45 mm

Height: 23 mm

In the charging station:

Length: 93 mm

Width: 45 mm

Height: 38 mm

Light sources: Decorative light 0.3 Watt, Power LED 1 Watt

Light colour: white

Colour: titanium

LIGHTING 2009



T2 Top 1

Surface luminaire with integral electronic ballast, replaceable T2 light source and opalescent light hood, 2000 mm lead with mini plug.

Height: 40 mm
Lengths: 13 Watt | 585 mm
21 Watt | 885 mm
23 Watt | 985 mm
Projection: 50 mm
Colours: titanium, (chrome on request)

For connection to 230 Volt supply (note plug system)



T2 Top 2

Surface luminaire with integral electronic ballast, replaceable T2 light source and opalescent light hood, 2000 mm lead with mini plug.

Height: 60 mm
Längen: 13 Watt | 585 mm
21 Watt | 885 mm
23 Watt | 985 mm
Projection: 230 mm
Colours: titanium, (chrome on request)

For connection to 230 Volt supply (note plug system)



T2 Line

T2 recessed luminaire with replaceable light source 6/8/11/13 Watt, 8 mm dia., 2 x 1000 mm lead with AMP-high-voltage plug/loose.

Width: 20 mm
Projection height: 1,2 mm
Recessed depth: 16 mm
Depth of cut / width of cut: 16 mm/ 16 mm
Length: 6 Watt | 306 mm
8 Watt | 407 mm
11 Watt | 509 mm
13 Watt | 610 mm

Colour: titanium

For connection to electronic ballast for Twin Line.



T2 Panel

Panel luminaire with replaceable T2 light source and opalescent light hood, 2000 mm lead with 7 mm dia. round plug.

Height:	32 mm
Width:	16,5 mm
Lengths:	13 Watt 560 mm 21 Watt 860 mm 23 Watt 960 mm
Projection:	32 mm
Colours:	titanium, (chrome on request)

For connection to 230 Volt supply (note round plug system)

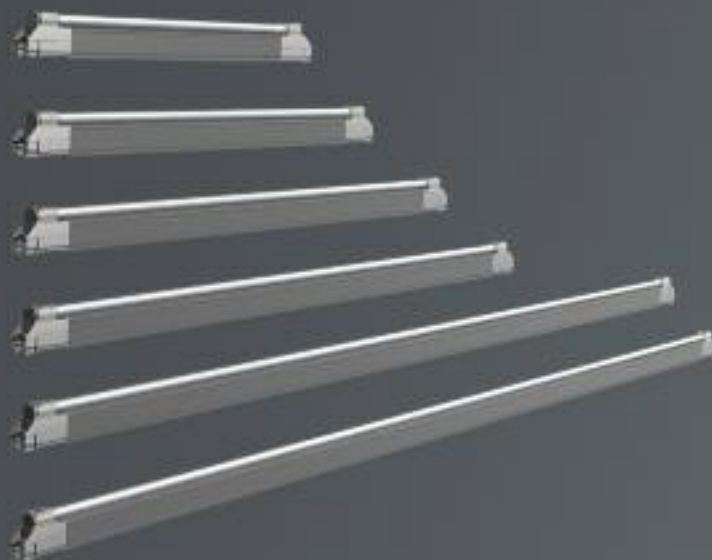


T2 Panel System

The luminaire profile can be matched individually to the furniture. Using a modular system, the basic luminaires are preconfigured by Koch in a luminaire profile and fitted with end caps and an opalescent light hood. 2000 mm lead with 7 mm dia. round plug.

Height:	32 mm
Width:	16,5 mm
Length:	individuell

For connection to 230 Volt supply (note round plug system)



Basic luminaires for T2 Panel System

T2 basic luminaire with integral electronic ballast and replaceable light source. The luminaire profile can be fitted with up to two individually configured luminaires, each luminaire with 2000 mm lead and 7 mm dia. round plug.

Length of basic luminaires:	
	6 Watt 231 mm
	8 Watt 333 mm
	11 Watt 433 mm
	13 Watt 534 mm
	21 Watt 838 mm
	23 Watt 938 mm

For connection to 230 Volt (note round plug system)

LIGHTING 2009



Drive E

LED recessed luminaire, 2000 mm lead with LED plug, white, for mounting in 12 mm cut groove.

Height: 1 mm
Length: 200 mm
Width: 14 mm

Rating: 0,9 Watt/ 12 Volt DC
Semi Power SMD

Light colours: white, warm white
Colour: titanium



Drive U

LED under-surface luminaire, 2000 mm lead with LED plug, white, for fitting by means of adhesive pad.

Height: 13 mm
Length: 200 mm
Width: 13 mm

Rating: 0,9 Watt/ 12 Volt DC
Semi Power SMD

Light colours: white, warm white
Colour: titanium



Ultimo

LED recessed luminaire, with opalescent light bezel for homogeneous lighting effect, 2000 mm lead with LED plug, white, for mounting in 14 mm cut groove.

Height: 9 mm
Length: 350 mm
Width: 27 mm

Rating: 1,5 Watt / 12 Volt DC

Light colours: white, warm white
Colour: titanium

Optionally: individual lengths available on request.



Simple

LED panel/back panel luminaire, with up and down effect, 2000 mm lead, with LED plug, white.

Length: 100 mm
Width: 25 mm
Projection: 12,5 mm

Rating: 0,3 Watt/ 12 Volt DC

Light colour: white
Colour: titanium

WeCan Top 1

LED surface luminaire, with 1 light window adjustable through 350°, 1600 mm lead with LED plug, white.

Length: 200 mm Rating: 1,8 Watt/ 12 Volt DC
 Projection: 260 mm Semi Power SMD
 Luminaire tube: Ø 13 mm Light colours: white, warm white
 Colour: titanium



WeCan Top 2

LED surface luminaire, with 2 light windows adjustable through 350°, 1600 mm lead with LED plug, white.

Length: 510 mm Rating: 3,6 Watt/ 12 Volt DC
 Projection: 260 mm Semi Power SMD
 Luminaire tube: Ø 13 mm Light colours: white, warm white
 Colour: titanium



WeCan Top 3

LED surface luminaire, with 2 light windows, central projecting arm, 1600 mm lead with LED plug, white.

Length: 400 mm Rating: 3,6 Watt/ 12 Volt DC
 Projection: 200 mm Semi Power SMD
 Luminaire tube: Ø 13 mm Light colours: white, warm white
 Colour: titanium

WeCan Panel

LED luminaire for panel mounting, with light window and integral sensor switch, 1600 mm lead with LED plug, white.

Luminaire head
 Diameter: Ø 13 mm Rating: 1,8 Watt/ 12 Volt DC
 Length: 352 mm Semi Power SMD
 Light colours: white, warm white
 Colour: titanium



LIGHTING 2009



Ice Line Sensor switch

Integrated into the Ice Line profile.

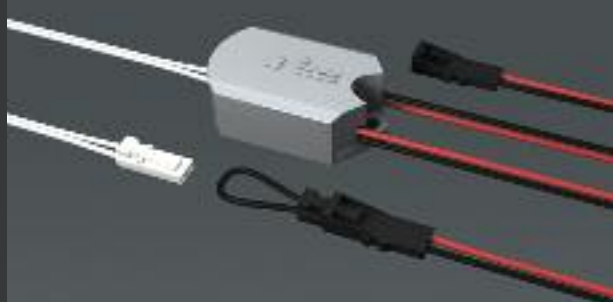
Voltage: 12 Volt DC



1-channel radio-control set

Hand-held transmitter, titanium, with 2 buttons (on/off), with titanium surface mounted housing or for dia. 32 mm hole. Complete with radio receiver, white, 3000 mm lead with Euro plug and 200 mm lead with Euro coupling.

Hand-held transmitter L x B x H: 35 x 35 x 14 mm
Radio receiver L x B x H: 150 x 47 x 19 mm



Controller, 2-way

Allows 350 mA Power LED luminaires to be connected to a 12 Volt DC electronic ballast. 2000 mm lead with 2 LED couplings, black, and 1 LED plug, white.

Voltage: 12 Volt DC



DC dimmer

On/off/dimmer toggle switch

Allows continuous dimming of 12 Volt DC LED luminaires, dimmer with 500 mm lead, LED plug white, 3 LED couplings white, and 2 AMP couplings for connection of the switches available optionally. For connection of a maximum of 20 Watt light output to a 12 Volt DC electronic ballast.

Accessories: Switch/microswitch with semi-circular nut, titanium, 2000 mm lead with AMP plug

Optionally: Decorative hole sleeve, chrome